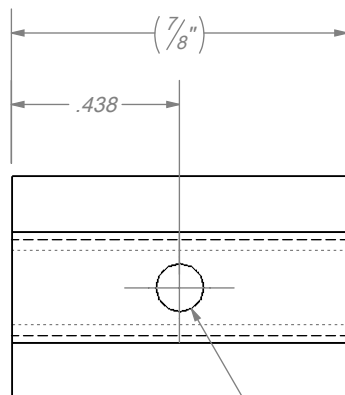


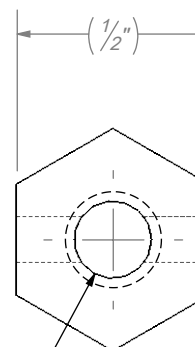


±.001 TO DOWELS
±.005 TO ALL OTHER FEATURES

REV	BY	DATE	DESCRIPTION	APP BY	APP DATE
+	+	07-17-2015			



Ø.125



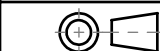
(TAP 1/4-20 THRU)

THIS DRAWING OR PRINT A) IS THE PROPERTY OF WAUSEON MACHINE & MANUFACTURING AND CONTAINS PROPRIETARY AND CONFIDENTIAL INFORMATION BELONGING TO W.M.M. B) IS MADE AVAILABLE TO THE RECIPIENT ON THE EXPRESS AND SPECIFIC CONDITION THAT NEITHER IT NOR THE INFORMATION CONTAINED THEREON OR DISCLOSED THEREIN SHALL BE DISCLOSED OR MADE AVAILABLE TO OTHERS WITHOUT THE EXPRESSED & SPECIFIC WRITTEN CONSENT OF W.M.M. AND THAT SUCH INFORMATION SHALL BE USED ONLY AS APPROVED IN WRITING BY W.M.M. AND NOT OTHERWISE. C) SHALL NOT BE DUPLICATED IN ANY MANNER OR TO ANY EXTENT WITHOUT W.M.M.'S PRIOR AND SPECIFIC WRITTEN CONSENT. D) SHALL BE RETURNED BY THE RECIPIENT THEREOF TO W.M.M. AT THE LATTER'S REQUEST PROMPTLY AFTER SUCH REQUEST IS MADE.



KURT HOFFMAN MOTORSPORTS

1337 N. CORNELL LANE
WAUSEON, OH 43567



CABLE END

TOLERANCES UNLESS OTHERWISE SPECIFIED
ANGULAR = XX ± 1°
FRACTIONAL = 1/XX ± 1/32"
2 PL DEC = X.XX ± .010"
3 PL DEC = X.XXX ± .005"
4 PL DEC = X.XXXX ± .001"
BREAK ALL EDGES .02 MAX

MATERIAL: COLD ROLLED STEEL

STOCK SIZE: McMASTER CARR #90977A130

HEAT TREAT:

REF. OF:

FINISH:

DESIGNED BY:

DETAILED BY: KJH

CHECKED BY:

DETAILED ON: 07-17-2015

SCALE:
2:1

SHEET:
1 OF 1

SIZE:
A

REVISION:
+

PART NUMBER:

throttle cable
end